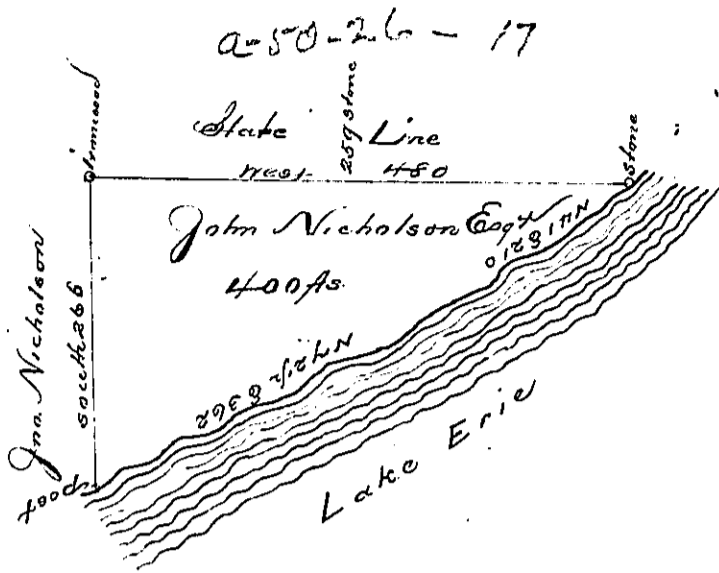


Y-120



Situate on Lake Erie bounded on the south by the southern boundary thereof and on the West & North by said Lake in Allegheny County, District No. 1. Set apart by June 1794 to John Nicholson Esquire on his warrant dated 13th April 1792. Containing, Four Hundred acres, and allowed.

Thos. Rees Jr.

David Brocthead Esq.
 Secy. Genl.

IN TESTIMONY that the above is a copy of the original remaining on file in the Department of Internal Affairs of Pennsylvania, made conformably to an Act of Assembly approved the 16th day of February, 1833, I have hereunto set my Hand and caused the Seal of said Department to be affixed at Harrisburg, this

_____ day of August, 1895.

James W. Latta
 Secretary of Internal Affairs.